

# County Clerk's Office

Richland County, Wisconsin

Derek S. Kalish  
County Clerk

Courthouse – P.O. Box 310  
Richland Center, Wisconsin 53581

(608) 647-2197  
(fax) (608) 647-6134

[derek.kalish@co.richland.wi.us](mailto:derek.kalish@co.richland.wi.us)

March 28, 2022

Please be advised that Richland County Board of Supervisors will convene at 7:00 p.m., Wednesday, March 30, 2022, virtually and at the Phoenix Center, located at 100 South Orange Street, Richland Center, Wisconsin.

<https://richlandcounty.my.webex.com/richlandcounty.my/j.php?MTID=m0cf7099ff86c17620fd615388f29a318>

Wednesday, March 30, 2022 7:00 pm | 3 hours | (UTC-06:00) Central Time (US & Canada)

Meeting number: 2552 045 0072

Password: richland

Join by phone

+1-408-418-9388 United States Toll

Access code: 25520450072

## Agenda

1. Roll Call
2. Pledge Of Allegiance
3. Approve Agenda
4. Approve March 23<sup>rd</sup> Minutes
5. Resolution Adopting Changes In The County Board Rules, Management Policy, And Committee Structure
6. Adjourn

**\*\* Items In Bold Have Been Added, Modified, Or Removed From Agenda \*\***

## **MARCH SPECIAL MEETING**

March 23, 2022

Chair Brewer called the meeting to order at 7 PM. Roll call found all members present except Seep and Nelson.

County Clerk Kalish led the Pledge of Allegiance.

Motion by McGuire, second by Van Landuyt for approval of the agenda. Motion carried and agenda declared approved.

Resolution No. 22 - 33 adopting changes in the County Board Rules, Management Policy, and Committee Structure was read by County Clerk Kalish. Motion by Turk, second by Frank that Resolution No. 22 - 33 be adopted and discussion continued. Murphy – Lopez and Luck provided a broad overview of proposed changes noted in proposed resolution. Motion by McKee to table adoption of Resolution No. 22-33, second by McGuire, and discussion continued. Motion by McKee to withdraw motion to table, second by McGuire, and discussion continued. Motion by McKee to postpone adoption of Resolution No. 22 – 33 indefinitely, second by McGuire, and a Roll Call vote was taken to postpone indefinitely: Yes – Murphy-Lopez, Van Landuyt, McKee, Brewer, Luck, Manning, Glasbrenner, Rudersdorf, Gentes, Turk, Cosgrove, Couey, Kaul, and McGuire, No – Carrow, Gottschall, Frank, Severson, and Williamson. With 14 Yes votes and 5 No Votes, the motion to postpone adoption of Resolution 22 – 33 carried.

### **RESOLUTION NO. 22 - 33**

A Resolution Adopting Changes In The County Board Rules, Management Policy And Committee Structure.

WHEREAS the Richland County Rules and Resolutions Committee and Ethics Board is charged to review and recommend any changes regarding the Rules of the County Board and Committee Structure; and

WHEREAS Richland County Strategic Plan directs consideration for “Streamline Organizational Structure (Effectiveness)” strategies intended to enable the county to find operational efficiencies, and the plan further specifies the action of a biannual review of committee structure with possibility of consolidation; and

WHEREAS the proposed changes to rules, policy and structure impacts: 1) election of the board chair and vice, 2) appointments of members to committee, boards and commissions, 3) removal of the same, 4) more defined duties and authorities for the chair and vice, 5) reconfiguration of structure and duties of committees, boards and commissions, 6) establishment of standing committees, and 7) other supporting changes; and

WHEREAS these changes are intended to create efficiencies, promote accountability, and facilitate further transition into an administrator form of county government in which oversight committee, boards and commissions provide leadership through policy; and

WHEREAS the Rules and Resolutions Committee and Ethics Board has carefully considered this matter and is now presenting this Resolution to the County Board for its consideration.

NOW THEREFORE BE IT RESOLVED by the Richland County Board of Supervisors that the proposed amendments, to the Rules of the County Board, Management Policy, and Committee Structure Document are hereby adopted and the changes to operations and structure will be implemented through administration in preparation for the 2022-2024 county board session; and

BE IT FURTHER RESOLVED that these changes shall be made available at the Administrator/ County Clerk Office and that a copy of these documents shall be published on the Richland County Website; and

BE IT FURTHER RESOLVED that this Resolution shall be effective upon its passage and publication.

VOTE ON FOREGOING RESOLUTION

AYES \_\_\_\_\_NOES \_\_\_\_\_

RESOLUTION OFFERED BY THE  
RULES AND RESOLUTIONS COMMITTEE

FOR AGAINST

RESOLUTION ADOPTION POSTPONED

DEREK S. KALISH  
COUNTY CLERK

DATED: MARCH 23, 2022

|                    |   |
|--------------------|---|
| SHAUN MURPHY-LOPEZ | X |
| CHAD COSGROVE      |   |
| KERRY SEVERSON     | X |
| MELISSA LUCK       | X |
| DONALD SEEP        | X |

Motion by Van Landuyt, second by Manning to adjourn to March 30, 2022 at 7:00 p.m. Motion carried and the meeting adjourned at 9:01 PM with one No vote from Severson.

STATE OF WISCONSIN )  
  )SS  
COUNTY OF RICHLAND)

I, Derek S. Kalish, County Clerk in and for the County of Richland, do hereby certify that the foregoing is a true copy of the proceedings of the County Board of Supervisors of Richland County for the meeting held on the 23<sup>rd</sup> day of March, 2022.

Derek S. Kalish  
Richland County Clerk

**RESOLUTION NO. 22 - 33**

A Resolution Adopting Changes In The County Board Rules, Management Policy And Committee Structure.

WHEREAS the Richland County Rules and Resolutions Committee and Ethics Board is charged to review and recommend any changes regarding the Rules of the County Board and Committee Structure; and

WHEREAS Richland County Strategic Plan directs consideration for “Streamline Organizational Structure (Effectiveness)” strategies intended to enable the county to find operational efficiencies, and the plan further specifies the action of a biannual review of committee structure with possibility of consolidation; and

WHEREAS the proposed changes to rules, policy and structure impacts: 1) election of the board chair and vice, 2) appointments of members to committee, boards and commissions, 3) removal of the same, 4) more defined duties and authorities for the chair and vice, 5) reconfiguration of structure and duties of committees, boards and commissions, 6) establishment of standing committees, and 7) other supporting changes; and

WHEREAS these changes are intended to create efficiencies, promote accountability, and facilitate further transition into an administrator form of county government in which oversight committee, boards and commissions provide leadership through policy; and

WHEREAS the Rules and Resolutions Committee and Ethics Board has carefully considered this matter and is now presenting this Resolution to the County Board for its consideration.

NOW THEREFORE BE IT RESOLVED by the Richland County Board of Supervisors that the proposed amendments, to the Rules of the County Board, Management Policy, and Committee Structure Document are hereby adopted and the changes to operations and structure will be implemented through administration in preparation for the 2022-2024 county board session; and

BE IT FURTHER RESOLVED that these changes shall be made available at the Administrator/ County Clerk Office and that a copy of these documents shall be published on the Richland County Website; and

BE IT FURTHER RESOLVED that this Resolution shall be effective upon its passage and publication.

VOTE ON FOREGOING RESOLUTION

AYES \_\_\_\_\_ NOES \_\_\_\_\_

RESOLUTION \_\_\_\_\_

DEREK S. KALISH  
COUNTY CLERK

DATED: MARCH 30, 2022

RESOLUTION OFFERED BY THE  
RULES AND RESOLUTIONS COMMITTEE

FOR      AGAINST

|                    |   |   |
|--------------------|---|---|
| SHAUN MURPHY-LOPEZ | X |   |
| CHAD COSGROVE      |   |   |
| KERRY SEVERSON     |   | X |
| MELISSA LUCK       | X |   |
| DONALD SEEP        | X |   |

# Committee Restructuring

Alternatives for the County Board

*Prepared and presented by Shaun Murphy-Lopez*

*Reviewed and feedback provided by Melissa Luck*

# Review

## Proposal would:

- Reduce the number of standing committees from 18 to 9 (*allowing more supervisors to attend more meetings*)
- Reduce the total number of committees from 54 to 39
- Spread standing committee membership evenly amongst all County Board supervisors (*3 each*)
- Allow additional membership appointments to joint bodies (*Ambulance, Economic Development, Symons*) and other bodies
- Give each standing committee a representative on 2 Executive-like committees:
  - Finance & Personnel
  - Rules & Strategic Planning

# Current Standing Committee Representation

*(varies from 1 to 9)*

| Supervisor     | # of Standing Committees | Audit   | Child Support | Committee on Committees | Emergency Management | Fair & Recycling | Finance & Personnel | HHS | Highway | Land Conservation | LEIC | Parks | Pine Valley | Property | Rules | Strategic Planning | UW Extension | UW Richland | Veterans | Zoning |
|----------------|--------------------------|---|---------------|-------------------------|----------------------|------------------|---------------------|-----|---------|-------------------|------|-------|-------------|----------|-------|--------------------|--------------|-------------|----------|--------|
| Carrow         | 3                        |   |               |                         |                      |                  |                     |     |         |                   |      |       |             |          |       |                    |              |             |          |        |
| Murphy-Lopez   | 5                        |   |               |                         |                      |                  |                     |     |         |                   |      |       |             |          |       |                    |              |             |          |        |
| Van Landuyt    | 4                        |   |               |                         |                      |                  |                     |     |         |                   |      |       |             |          |       |                    |              |             |          |        |
| Seep           | 5                        |   |               |                         |                      |                  |                     |     |         |                   |      |       |             |          |       |                    |              |             |          |        |
| McKee          | 2                        |   |               |                         |                      |                  |                     |     |         |                   |      |       |             |          |       |                    |              |             |          |        |
| Brewer         | 4                        |   |               |                         |                      |                  |                     |     |         |                   |      |       |             |          |       |                    |              |             |          |        |
| Luck           | 6                        |   |               |                         |                      |                  |                     |     |         |                   |      |       |             |          |       |                    |              |             |          |        |
| Manning        | 2                        |   |               |                         |                      |                  |                     |     |         |                   |      |       |             |          |       |                    |              |             |          |        |
| Gottschall     | 3                        |   |               |                         |                      |                  |                     |     |         |                   |      |       |             |          |       |                    |              |             |          |        |
| Glasbrenner    | 3                        |   |               |                         |                      |                  |                     |     |         |                   |      |       |             |          |       |                    |              |             |          |        |
| Rudersdorf     | 3                        |   |               |                         |                      |                  |                     |     |         |                   |      |       |             |          |       |                    |              |             |          |        |
| Gentes         | 4                        |   |               |                         |                      |                  |                     |     |         |                   |      |       |             |          |       |                    |              |             |          |        |
| Turk           | 5                        |   |               |                         |                      |                  |                     |     |         |                   |      |       |             |          |       |                    |              |             |          |        |
| Cosgrove       | 7                        |   |               |                         |                      |                  |                     |     |         |                   |      |       |             |          |       |                    |              |             |          |        |
| Frank          | 5                        |   |               |                         |                      |                  |                     |     |         |                   |      |       |             |          |       |                    |              |             |          |        |
| Severson       | 9                        |   |               |                         |                      |                  |                     |     |         |                   |      |       |             |          |       |                    |              |             |          |        |
| Williamson     | 5                        |   |               |                         |                      |                  |                     |     |         |                   |      |       |             |          |       |                    |              |             |          |        |
| Couey          | 4                        |   |               |                         |                      |                  |                     |     |         |                   |      |       |             |          |       |                    |              |             |          |        |
| Nelson         | 5                        |   |               |                         |                      |                  |                     |     |         |                   |      |       |             |          |       |                    |              |             |          |        |
| Kaul           | 2                        |   |               |                         |                      |                  |                     |     |         |                   |      |       |             |          |       |                    |              |             |          |        |
| McGuire        | 1                        |   |               |                         |                      |                  |                     |     |         |                   |      |       |             |          |       |                    |              |             |          |        |
| <b>Average</b> | <b>4.1</b>               | <b>9 committees: 1 Supervisor</b><br><b>7 committees: 1 Supervisor</b><br><b>6 committees: 1 Supervisor</b><br><b>5 committees: 6 Supervisors</b><br><b>4 committees: 4 Supervisors</b><br><b>3 committees: 4 Supervisors</b><br><b>2 committees: 3 Supervisors</b><br><b>1 committee: 1 Supervisor</b> |               |                         |                      |                  |                     |     |         |                   |      |       |             |          |       |                    |              |             |          |        |





5 Committees  
have no  
representation  
on Finance &  
Personnel

| Standing Committees          | Finance & Personnel<br>Committee Representation | Names   |
|------------------------------|---|---|
| Audit                        | 0   |   |
| Child Support                | 2   | Gentes, Turk  |
| Emergency Management         | 2   | Brewer, Turk  |
| Fair & Recycling             | 0   |   |
| Finance & Personnel          | 7   | Brewer, Couey, Gentes, Luck, Murphy-Lopez, Seep, Turk |
| HHS                          | 0   |   |
| Highway                      | 1   | Couey   |
| Land Conservation            | 2   | Luck, Murphy-Lopez                                    |
| LEJC                         | 2   | Luck, Turk  |
| Parks                        | 0   |   |
| Pine Valley                  | 2   | Brewer, Seep  |
| Property                     | 0   |   |
| Rules & Resolutions & Ethics | 3   | Luck, Murphy-Lopez, Seep                              |
| Strategic Planning           | 1   | Luck  |
| UW Extension                 | 2   | Couey, Murphy-Lopez                                   |
| UW Richland                  | 1   | Gentes  |
| Veterans                     | 1   | Seep  |
| Zoning                       | 2   | Couey, Gentes   |

1 Committee  
has no  
representation  
on Rules or  
Strategic  
Planning

| Standing Committee           | Rules & Strategic Planning<br>Committee Representation | Names  |
|------------------------------|--|--|
| Audit                        | 2  | Carrow, Frank                                |
| Child Support                | 0  |  |
| Emergency Management         | 1  | Severson                                     |
| Fair & Recycling             | 1  | Severson                                     |
| Finance & Personnel          | 3  | Luck, Murphy-Lopez, Seep                     |
| HHS                          | 2  | Glasbrenner, Severson                        |
| Highway                      | 2  | Cosgrove, Severson                           |
| Land Conservation            | 3  | Frank, Luck, Murphy-Lopez                    |
| LEJC                         | 4  | Cosgrove, Frank, Luck, Severson              |
| Parks                        | 1  | Severson                                     |
| Pine Valley                  | 1  | Seep   |
| Property                     | 2  | Carrow, Cosgrove                             |
| Rules & Resolutions & Ethics | 5  | Cosgrove, Luck, Murphy-Lopez, Seep, Severson |
| Strategic Planning           | 5  | Carrow, Frank, Glasbrenner, Luck, Severson   |
| UW Extension                 | 1  | Murphy-Lopez                                 |
| UW Richland                  | 2  | Cosgrove, Frank.                             |
| Veterans                     | 1  | Seep   |
| Zoning                       | 2  | Cosgrove, Glasbrenner                        |

# 12 Supervisors serve on Executive-like committees

*(varies from 0 to 3)*

| Supervisor     | # of Executive Standing Committees | Audit | Child Support | Committee on Committees | Emergency Management | Fair & Recycling | Finance & Personnel | HHS | Highway | Land Conservation | LEJC | Parks | Pine Valley | Property | Rules | Strategic Planning | UW Extension | UW Richland | Veterans | Zoning |
|----------------|------------------------------------|-------|---------------|-------------------------|----------------------|------------------|---------------------|-----|---------|-------------------|------|-------|-------------|----------|-------|--------------------|--------------|-------------|----------|--------|
| Carrow         | 1                                  |       |               |                         |                      |                  |                     |     |         |                   |      |       |             |          |       |                    |              |             |          |        |
| Murphy-Lopez   | 2                                  |       |               |                         |                      |                  |                     |     |         |                   |      |       |             |          |       |                    |              |             |          |        |
| Van Landuyt    | 0                                  |       |               |                         |                      |                  |                     |     |         |                   |      |       |             |          |       |                    |              |             |          |        |
| Seep           | 2                                  |       |               |                         |                      |                  |                     |     |         |                   |      |       |             |          |       |                    |              |             |          |        |
| McKee          | 0                                  |       |               |                         |                      |                  |                     |     |         |                   |      |       |             |          |       |                    |              |             |          |        |
| Brewer         | 1                                  |       |               |                         |                      |                  |                     |     |         |                   |      |       |             |          |       |                    |              |             |          |        |
| Luck           | 3                                  |       |               |                         |                      |                  |                     |     |         |                   |      |       |             |          |       |                    |              |             |          |        |
| Manning        | 0                                  |       |               |                         |                      |                  |                     |     |         |                   |      |       |             |          |       |                    |              |             |          |        |
| Gottschall     | 0                                  |       |               |                         |                      |                  |                     |     |         |                   |      |       |             |          |       |                    |              |             |          |        |
| Glasbrenner    | 1                                  |       |               |                         |                      |                  |                     |     |         |                   |      |       |             |          |       |                    |              |             |          |        |
| Rudersdorf     | 0                                  |       |               |                         |                      |                  |                     |     |         |                   |      |       |             |          |       |                    |              |             |          |        |
| Gentes         | 1                                  |       |               |                         |                      |                  |                     |     |         |                   |      |       |             |          |       |                    |              |             |          |        |
| Turk           | 1                                  |       |               |                         |                      |                  |                     |     |         |                   |      |       |             |          |       |                    |              |             |          |        |
| Cosgrove       | 1                                  |       |               |                         |                      |                  |                     |     |         |                   |      |       |             |          |       |                    |              |             |          |        |
| Frank          | 1                                  |       |               |                         |                      |                  |                     |     |         |                   |      |       |             |          |       |                    |              |             |          |        |
| Severson       | 2                                  |       |               |                         |                      |                  |                     |     |         |                   |      |       |             |          |       |                    |              |             |          |        |
| Williamson     | 0                                  |       |               |                         |                      |                  |                     |     |         |                   |      |       |             |          |       |                    |              |             |          |        |
| Couey          | 1                                  |       |               |                         |                      |                  |                     |     |         |                   |      |       |             |          |       |                    |              |             |          |        |
| Nelson         | 0                                  |       |               |                         |                      |                  |                     |     |         |                   |      |       |             |          |       |                    |              |             |          |        |
| Kaul           | 0                                  |       |               |                         |                      |                  |                     |     |         |                   |      |       |             |          |       |                    |              |             |          |        |
| McGuire        | 0                                  |       |               |                         |                      |                  |                     |     |         |                   |      |       |             |          |       |                    |              |             |          |        |
| <b>Average</b> | <b>0.8</b>                         |       |               |                         |                      |                  |                     |     |         |                   |      |       |             |          |       |                    |              |             |          |        |
|                |                                    |       |               |                         |                      |                  |                     |     |         |                   |      |       |             |          |       |                    |              |             |          |        |
|                |                                    |       |               |                         |                      |                  |                     |     |         |                   |      |       |             |          |       |                    |              |             |          |        |
|                |                                    |       |               |                         |                      |                  |                     |     |         |                   |      |       |             |          |       |                    |              |             |          |        |
|                |                                    |       |               |                         |                      |                  |                     |     |         |                   |      |       |             |          |       |                    |              |             |          |        |

3 Executive Committees: 1 Supervisor  
 2 Executive Committees: 3 Supervisors  
 1 Executive Committee: 8 Supervisors  
 0 Executive Committees: 9 Supervisors

# Issue 1: Executive Committee Membership

## Option A

- Keep current proposal to require chairs of standing committees to serve on the Finance & Personnel and Rules & Strategic Planning Committees

## Option B

- Amend to require:
  - Chairs of standing committees to serve on Finance & Personnel
  - Vice chairs of standing committees to serve on Rules & Strategic Planning

## Option C

- Amend to require:
  - Standing committees choose their representatives (who may not be Chair or Vice Chair) to serve on the Finance & Personnel and Rules & Strategic Planning Committees

# Issue 2: Citizen Member Voting

## Option A

- Keep current proposal to allow 13 citizen members to vote on matters not pertaining to their appointment
  - e.g., Veterans citizen members *may* vote on HHS matters

## Option B

- Amend to limit citizen members' ability to vote on matters not pertaining to their appointment
  - e.g., Veterans citizen members *may not* vote on HHS matters

# 13 citizen members

|    | Finance & Personnel Committee | Rules & Strategic Planning Committee | HHS & Veterans Committee | Pine Valley & Child Support Committee | Public Safety Committee | Education Committee | Land & Zoning Committee | Fair, Recycling, & Parks Committee | Public Works Committee |
|----|-------------------------------|--------------------------------------|--------------------------|---------------------------------------|-------------------------|---------------------|-------------------------|------------------------------------|------------------------|
| 1  | County Board Chair            | County Board Vice Chair              |                          |                                       |                         |                     |                         |                                    |                        |
| 2  | County Board Vice Chair       | County Board Chair                   |                          |                                       |                         |                     |                         |                                    |                        |
| 3  |                               |                                      |                          |                                       |                         |                     |                         |                                    |                        |
| 4  |                               |                                      |                          |                                       |                         |                     |                         |                                    |                        |
| 5  |                               |                                      |                          |                                       |                         |                     |                         | Citizen H (Fair)                   |                        |
| 6  |                               |                                      |                          |                                       |                         |                     |                         | Citizen I (Fair)                   |                        |
| 7  |                               |                                      | Citizen A (HHS)          | Citizen F (Pine Valley)               |                         |                     | Citizen G (FSA)         | Citizen J (Parks)                  |                        |
| 8  |                               |                                      | Citizen B (HHS)          |                                       |                         |                     |                         | Citizen K (Parks)                  |                        |
| 9  |                               |                                      | Citizen C (HHS)          |                                       |                         |                     |                         | Citizen L (Parks)                  |                        |
| 10 |                               |                                      | Citizen D (Veterans)     |                                       |                         |                     |                         | Citizen M (Fair)                   |                        |
| 11 |                               |                                      | Citizen E (Veterans)     |                                       |                         |                     |                         |                                    |                        |
|    |                               |                                      |                          | Chair of Standing Committee           |                         |                     |                         |                                    |                        |

|               | Standing Committee A | Standing Committee B | Standing Committee C |
|---------------|----------------------|----------------------|----------------------|
| Supervisor 1  |                      |                      |                      |
| Supervisor 2  |                      |                      |                      |
| Supervisor 3  |                      |                      |                      |
| Supervisor 4  |                      |                      |                      |
| Supervisor 5  |                      |                      |                      |
| Supervisor 6  |                      |                      |                      |
| Supervisor 7  |                      |                      |                      |
| Supervisor 8  |                      |                      |                      |
| Supervisor 9  |                      |                      |                      |
| Supervisor 10 |                      |                      |                      |
| Supervisor 11 |                      |                      |                      |
| Supervisor 12 |                      |                      |                      |
| Supervisor 13 |                      |                      |                      |
| Supervisor 14 |                      |                      |                      |
| Supervisor 15 |                      |                      |                      |
| Supervisor 16 |                      |                      |                      |
| Supervisor 17 |                      |                      |                      |
| Supervisor 18 |                      |                      |                      |
| Supervisor 19 |                      |                      |                      |
| Supervisor 20 |                      |                      |                      |
| Supervisor 21 |                      |                      |                      |

# Issue 3: Executive Committee Review

## Option A

- Keep current proposal to ***not require*** Rule 14 (purchasing, bidding) items to go through the Finance & Personnel Committee
- Keep current proposal to ***not require*** all County Board resolutions to go through the Rules & Strategic Planning Committee

## Option B

- Amend to ***require*** Rule 14 (purchasing, bidding) items to go through the Finance & Personnel Committee
  - Amend to ***require*** all other County Board resolutions to go through the Rules & Strategic Planning Committee
- 

## Option C

- Keep current proposal to ***require*** non-standing committee items to go through an Executive Committee before County Board consideration.

## Option D

- Amend to ***not require*** non-standing committee items to go through an Executive Committee before County Board confirmation.

# Issue 4: Ambulance Committee Representation

## Option A

- Keep current proposal to require Chair and Vice Chair to serve on Ambulance Committee

## Option B

- Amend to revert to previous language of “2 County Board Supervisors,” but clarify that these appointments are to be recommended by the County Board Chair with County Board confirmation



# Issue 5: Citizens Voting for Chair and Vice Chair

## Option A

- Keep current proposal to stay silent on the matter of citizens voting for Chair and Vice Chair of certain Standing Committees

## Option B

- Amend to **allow** citizens to have the ability to vote for Chair and Vice Chair of certain Standing Committees

## Option C

- Amend to **not allow** citizens to have the ability to vote for Chair and Vice Chair of certain Standing Committees

# Issue 6: Term Limits

## Option A

- Keep current proposal to stay silent on the matter of term limits

## Option B

- Amend to ***reset*** term limits for members of standing committees with a name change

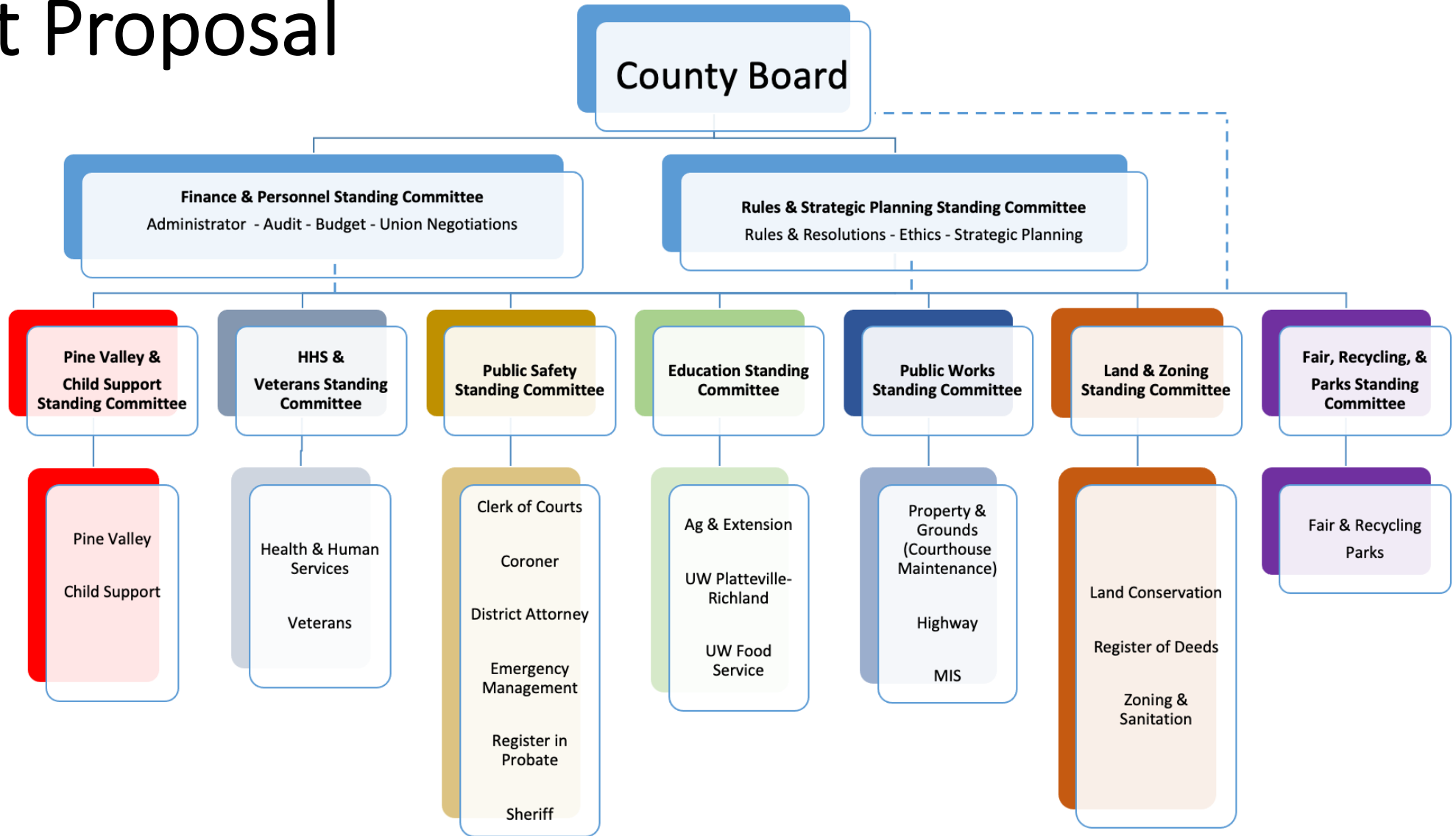
## Option C

- Amend to ***not reset*** term limits for members of standing committees with a name change

## Option D

- Eliminate all term limits

# Current Proposal



# Earlier Proposal

